



**ServoTech**  
**INDUSTRIES**

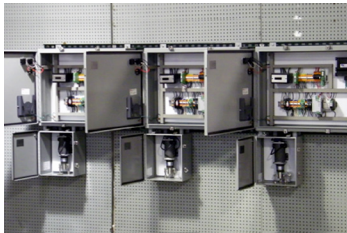
Technology Center:  
25580 Brest RD, Taylor, MI 48180 USA  
Email: [servotech@servotechco.com](mailto:servotech@servotechco.com)  
Phone: (734) 697-5555  
[www.servotechco.com](http://www.servotechco.com)

## ServoTech Emission System Components

- NOxRedux™, Active SCR System
- EcoLET, Low Emission Technology
- EcoZET, Zero Emission Technology
- UREA / Ammonia Metering / Dosing Injectors & Pumps
- Diesel Particulate Reduction, DPF Regeneration Systems
- Fuel Borne Catalyst / Additive Dosing & Control
- Manufacturing Parts

ServoTech Industries offer products and components for emissions control and abatement systems enabling various industries and applications meeting their regulatory EPA / CARB emissions standards.

ServoTech EcoLET, EcoZET, and NOx reduction SCR products, NOxRedux™-urea and NOxRedux™-NH<sub>3</sub> are the most effective systems for stack and emissions reduction for applications in chemical plants, power plants, gen-sets, locomotive, marine engines, food and beverage industries, ovens, coffee roasters, and boilers fueled with liquid/ gaseous/bio-fuel.



### ServoTech NOxRedux™ Active SCR System

ServoTech Active SCR Systems (NOxRedux™) reduces NOx levels from mobile and stationary exhaust by 98%. NOxRedux™-urea and NOxRedux™-NH<sub>3</sub> are the most effective systems for stack and exhaust NOx reduction for applications in chemical plants, power plants, gen-sets, locomotive, marine engines, food and beverage industries, ovens and boilers fueled with liquid/gaseous/bio-fuel.

ServoTech NOxRedux™ Active SCR System Reactor provides simultaneous reduction of CO, HC and NOx with a minimum NH<sub>3</sub> slip (well within the required level).

The ServoTech NOxRedux™ Active SCR system, reduces pulsation and controls exhaust gas mixing to assure even distribution of gases across the catalyst interface.





**ServoTech**  
**INDUSTRIES**

Technology Center:  
25580 Brest RD, Taylor, MI 48180 USA  
Email: [servotech@servotechco.com](mailto:servotech@servotechco.com)  
Phone: (734) 697-5555  
[www.servotechco.com](http://www.servotechco.com)



## NOxRedux™ Package

SCR Systems Include:

- SCR Catalyst components and housing (SCR and optional Ammonia Slip Catalyst, ASC)
- Optional pre SCR Oxidation Catalyst
- Reductant dosing unit and control panel
- Sensors pre/post (NOx, Temperature, Back Pressure)
- Wiring Harness
- OBD System (warning lights, Buzzers)
- Optional Reductant Tank (UREA, Aqueous Ammonia, Anhydrous Ammonia)
- Training at ServoTech site (Field Installation is offered)
- Operating Manuals
- Optional set up / startup of the system
- Optional remote emissions level monitoring







**ServoTech**  
**INDUSTRIES**

Technology Center:  
25580 Brest RD, Taylor, MI 48180 USA  
Email: [servotech@servotechco.com](mailto:servotech@servotechco.com)  
Phone: (734) 697-5555  
[www.servotechco.com](http://www.servotechco.com)

## Catalyst Component

The catalyst component includes a high performance low or high temperature SCR catalyst and an optional ammonia slip catalyst. It provides maximum NOx conversion efficiency (up to 98%, via SCR Catalyst). Catalyst size is optimized based on engine size and exhaust flow, emissions level, and condition of engine operation and catalyst performance data. NOxRedux™ controls urea/ammonia dosing rate precisely, therefore minimizing the catalyst size.



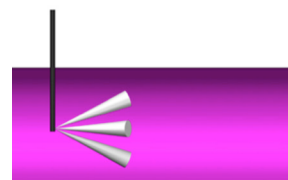
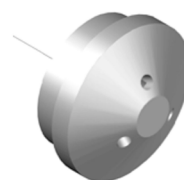
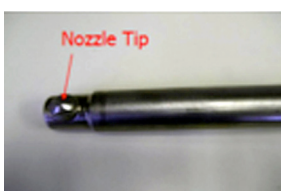
## Reductant Dosing Unit

Specifications	A	B	C
Pump Type	Solenoid	Magnetic, Gear	Magnetic, Gear
Pumping Medium	AdBlue	AdBlue or Aqueous Ammonia	AdBlue or Aqueous Ammonia
Max Differential Pressure	10 Bar	~5.0 Bar	~5.0 Bar
Max Flow	6 L/hr	30 L/hr	Up to 400 L/hr
Temperature Range	-50 ~ 350 (°F)	-50 ~ 350 (°F)	-50 ~ 350 (°F)
Accuracy	± 5%	± 3%	± 3%
Power	DC 12 or 24 V	DC 24 V	AC 120 V



## Urea Injector / Nozzle

ServoTech offers air assisted nozzles for urea delivery. The air assisted nozzle mounts after the pre-NOx sensor and mixes the metered urea with air for a fine atomization. Depending on the space availability from the turbo outlet to the SCR catalyst, the nozzle can accommodate the packaging design for optimum operation.



## NOxRedux™ Control Unit

NOxRedux™ is a universal controller which designed for anhydrous ammonia, aqueous ammonia, URAE and fuels. The unit can control dosing rate by both open-loop and close-loop strategies (need NOx sensor or NH3 sensor feed back for closed loop control). A look up table will help you to calibrate the initial dosing rate.

